


# **Exe Rail Progress Report February 2017**



# Marsh Barton Station

- Construction delayed due to the need to revise designs to meet changing Network Rail standards.
- Likely to have an impact on scheme cost but this is yet to be fully quantified.
- DCC submitted a £3m bid to the New Stations Fund – the result of which is expected to be announced in the spring.
- The start date for works will be no earlier than Autumn 2017. Currently looking into options to minimise length of construction programme.



# Peninsula Rail Task Force (PRTF)

- Five Local Authorities (Devon, Torbay, Plymouth, Somerset & Cornwall) worked together to produce a 20 year strategy report.
- Three Point Plan
  - Resilience
  - Connectivity through improved journey times
  - Capacity/Quality
- Final report submitted to Government in November and are now awaiting a response.
- Reopening of line from Bere Alston to Tavistock, strengthening of sea wall at Dawlish, improvements to Waterloo line, resumption of regular services to Okehampton and flood defence at Cowley Bridge all mentioned



# Exeter St David's Station Forecourt

- DCC is working with Great Western Railway, Network Rail and Exeter City Council to develop a masterplan for new station forecourt at Exeter St Davids.
- Key feature of this masterplan include the relocation of car parking; promotion of space for commercial and residential development; and the location of drop off points and bus stops.
- Plans to upgrade the depot to the rear of the station – this is required to accommodate the rolling stock from December 2018.



## Exeter-Honiton

- DCC recently submitted a bid to the Government's Local Majors Fund seeking £2.5m for design work to improve capacity and resilience for the route between Exeter and Castle Cary via Yeovil.
- Schemes would enable a half hourly frequency between Exeter and Honiton whilst also improving the diversionary route for Paddington-Plymouth/Penzance services in event of disruption at Cowley Bridge or Somerset Levels.
- The bid was unsuccessful so alternative funding streams to progress design work will be investigated.
- The LEP is commissioning timetabling work (with funding contribution from DCC) to identify extent of new double track sections required to significantly improve journey times between Exeter and Waterloo.

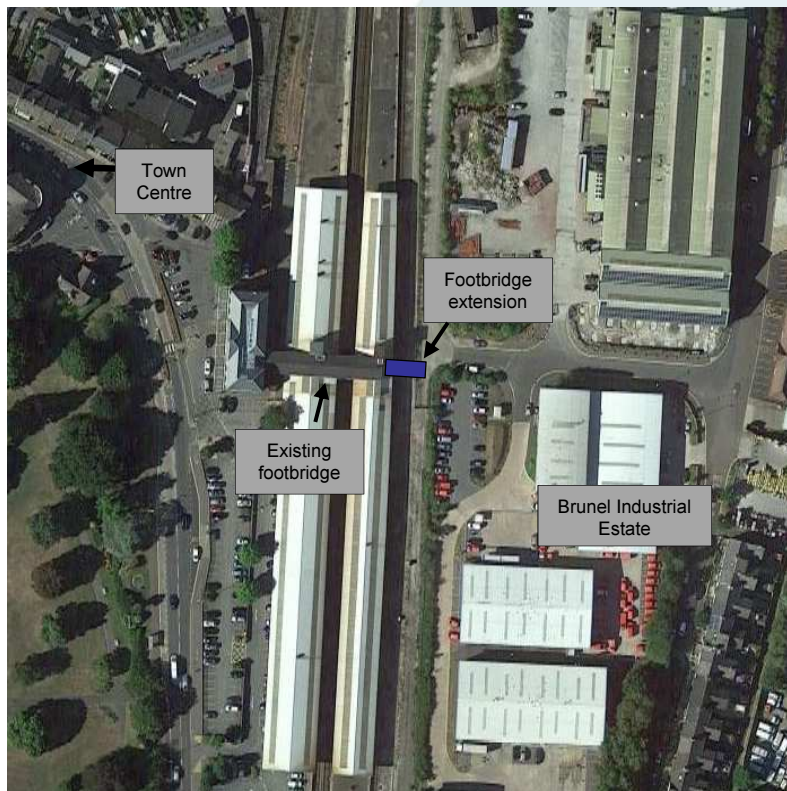
# Exmouth Station Redevelopment

- Land transfers between DCC and Network Rail have now taken place with construction works anticipated to begin in the summer of 2017. These improvement works include:
  - Access to trains via front entrance at all times
  - Improved internal building configuration
  - New ramp to better standard gradient
  - Seat incorporated into outside perimeter of ramp
  - Automatic door
  - Prominent signage in line with new brand
- Construction works for the new M&S Simply Food store, being built on the side of the bus station, are nearly complete.
- Working with East Devon and local community on further interchange improvements



# Newton Abbot Footbridge

- Scheme will extend the current footbridge at Newton Abbot Station so that the station can be accessed from both sides of the railway including Brunel Industrial Estate and cycle routes to Kingsteignton / Bovey / Moretonhampstead / Teignmouth.



- Close to being signed off at the GRIP 3 stage. Hoping to secure planning permission and land this year so the scheme can be delivered when funds become available.
- Separate scheme being developed to create more direct route to town centre via Dark Arches

# Okehampton/Tavistock

## Okehampton

- Ambition to introduce regular future services between Okehampton and Exeter. DCC also working with Dartmoor Railway to develop options for a new station on the eastern edge of the town.



## Tavistock

- The proposed reopening of the line between Bere Alston and Tavistock was included within the Peninsula Rail Task Force report and its hoped that an allocation of funds may be made available by Government to allow further scheme development work.
- Continuing to acquire land along the route.



# Franchise Updates

- Award of new South Western rail franchise, serving the Exeter to London Waterloo route, to be determined by the DfT in April 2017. Incumbent operator Stagecoach and FirstGroup have both bid for the franchise. Successful bidder to take over/continue franchise in August 2017.
- Cross Country Trains recently consulted on a revised December 2017 timetable. The proposals included two trains per hour between Exeter St David's and Bristol Temple Meads through most of the day at expense of extensions to Paignton (with exception of one train per day). DfT decision awaited.



# Electric Bikes

- Electric bike scheme in Exeter was launched in October - first of its type in the UK.
- Improves integration between rail stations and onwards destinations, particularly employment sites.
- The docking stations currently installed include:
  - Exeter Central Rail Station
  - Exeter University
  - Digby & Sowton Rail Station
  - Exeter Civic Centre
- Future phases include potential docking stations at Exeter St David's rail station, the proposed Marsh Barton rail station and other stations to the east of Exeter such as Pinhoe and Cranbrook.



- Bus real time information system expected to be launched in the spring, improving integration between rail and bus
- Garden Villages/Towns
  - Cullompton has been allocated funding for design work on a garden village development which could include a new rail station
- Newcourt/Cranbrook Patronage
  - Both enjoying high passenger numbers. Estimated figure of 80,000 trips in first year since Cranbrook opened and 73,000 in first year since Newcourt opened.

## Devon Metro Strategy – Going forward



- Developing updated strategy to guide and inform future scheme development
- Being developed in tandem with emerging Greater Exeter Local Plan for growth in housing, employment etc. to 2040 and other local plans
- Will set clear strategy to inform outputs required through industry planning and critical schemes including Exeter area resignalling due around 2026
- Prioritises work on other enhancements including new stations, reopenings, capacity enhancements and accessibility improvements
- Focus on communications, marketing and publicity with TOCs and Devon and Cornwall Rail Partnership
- Inform future franchise priorities